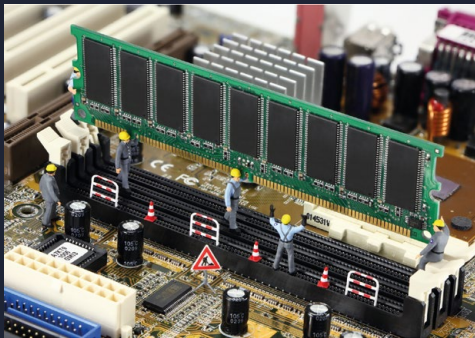
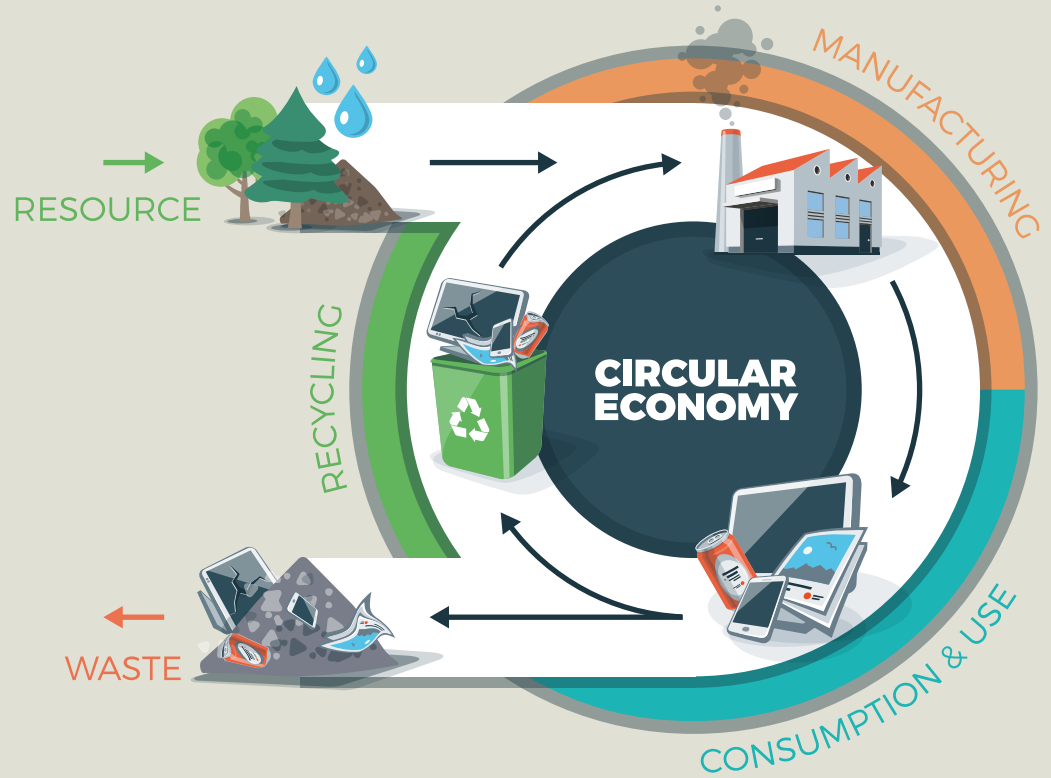


# CIRCULAR ECONOMY & E-WASTE



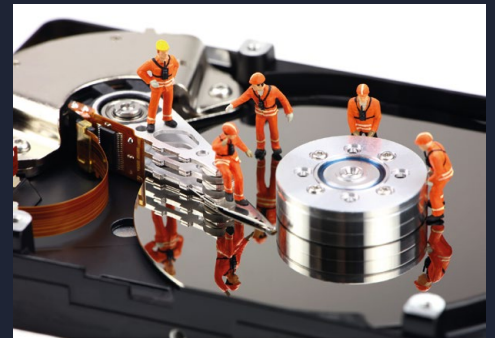
## REUSE

If you are looking to reimplement legacy equipment but lack parts or expertise then Comtek is your ideal partner. We are experts in supporting legacy and can provide contract or procurement services.



## REPAIR

Comteks repairs and spares services enables equipment to be kept in good running order, no matter the age we work with many legacy parts so nothing is too old for us to handle!



## RECYCLE

Unwanted equipment taking up space and losing value? Ask us about our deinstallation and consignment services, we guarantee responsible recycling of any unusable EOL hardware.

## WEEE DIRECTIVE

E-waste or Waste Electrical and Electronic Equipment (WEEE) describes discarded, surplus, obsolete, or broken electrical or electronic devices such as computers, televisions, and mobile phones. Globally, e-waste is growing at a rate of about 40 million tonnes per year as consumers, in both developed and developing nations, buy new gadgets and discard their old ones.

Campaigners believe unscrupulous scrap merchants are illegally dumping millions of tonnes of dangerous waste on the developing world. The Answer to the E-waste problem – Reuse, Repair and Recycle. It is indeed possible to considerably extend the working life span of a network infrastructure almost indefinitely